



Regis Online Master's Programs Perfect for Second Career Seekers

People who already have a bachelor's degree and want to start a career in teaching have a ready-made pathway with Regis University's [Division of Education's](#) 100% asynchronous online degree programs in education.

Others have found themselves in a position in a school as a paraprofessional or other school develop an interest in becoming a teacher.

Still others are passionate about their content expertise but either haven't found a way to use

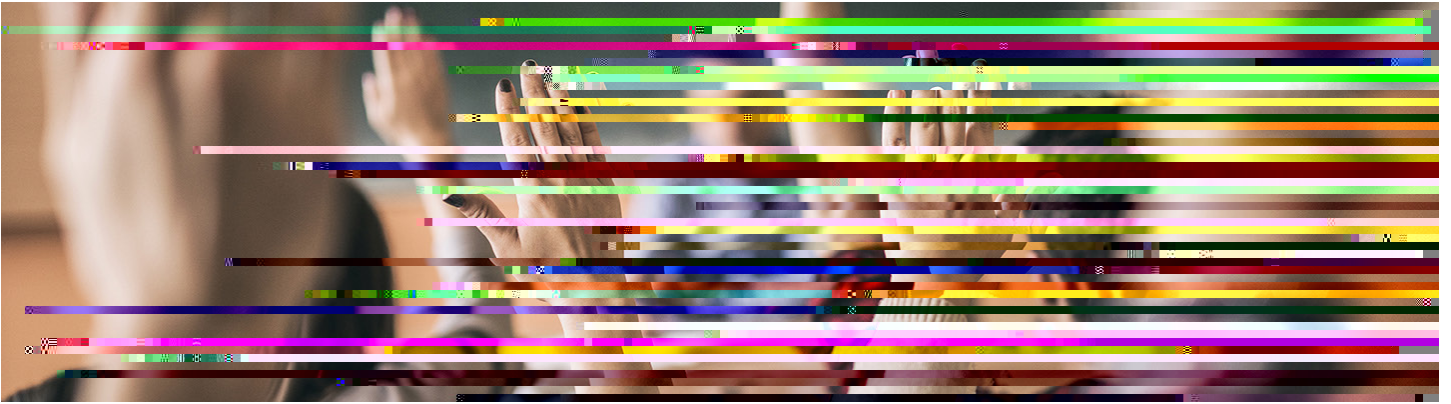
potential teacher candidates should keep in mind is that the master's degree means they will have higher starting salaries in most school districts and are likely more competitive candidates for their dream teaching position.



Preparing Teachers to Contribute to the Community

preparing teachers to ensure all kids are learning at a high level. The point is to build a teacher

take courses to prepare them to teach in inclusive classrooms and become CLD-endorsed.



Thinking Ahead for Colorado's Rural Schools

1. Administrators can keep this degree option in their recruiting toolbox when speaking candidates.

initial licensure programs are typically more mature and have more life experience than traditional candidates. They are likely to be more well-rounded and dedicated to teaching.

3. Graduates with a master's degree from Regis are likely to be CLD- and/or SPED-en-
4. Graduates with a master's degree from Regis are trained in the [Jesuit tradition](#)

Upcoming Application Timelines

_____ applications for fall 2024 accepted:

_____ applications for spring 2025 accepted:

Visit TEACH Colorado's _____ page for information about additional scholarships.

[Department of Education's Educator Recruitment and District Supports f yer.](#)

Featured Partners

Learn more about our [featured partners](#) and how they are helping to solve the teacher shortage in rural Colorado.

[Marzano Research](#)

can help you develop and use actionable strategies leading to rural school success.

