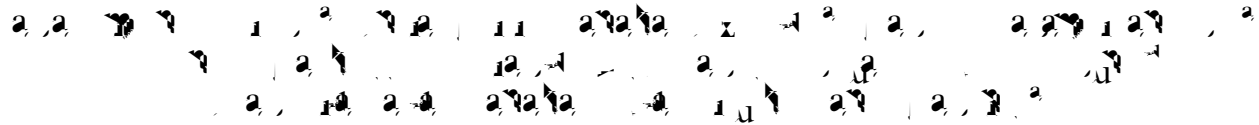
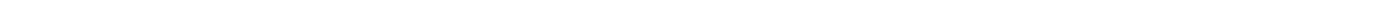


Purification of a phospholipase A₂ from *Loxotropa obliqua* caterpillar bristle extract



^a Laboratório de Fisiopatologia, Instituto Butantan, São Paulo, Brazil
School of Biological Science, University of Northern Colorado, Greeley, CO, USA
Departamento de Bioquímica, UNIFESP, São Paulo, Brazil
^d Laboratório de Bioquímica e Biof



1. 2. 3. 4. 5. 6. 7. 8. 9. 10. 11. 12. 13. 14. 15. 16. 17. 18. 19. 20. 21. 22. 23. 24. 25. 26. 27. 28. 29. 30. 31. 32. 33. 34. 35. 36. 37. 38. 39. 40. 41. 42. 43. 44. 45. 46. 47. 48. 49. 50. 51. 52. 53. 54. 55. 56. 57. 58. 59. 60. 61. 62. 63. 64. 65. 66. 67. 68. 69. 70. 71. 72. 73. 74. 75. 76. 77. 78. 79. 80. 81. 82. 83. 84. 85. 86. 87. 88. 89. 90. 91. 92. 93. 94. 95. 96. 97. 98. 99. 100.

Lonomia obliqua

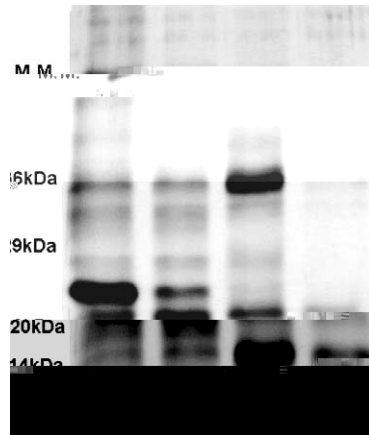
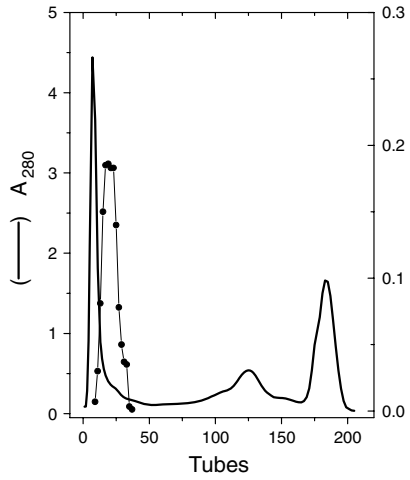
... % ...

L. obliqua

... L. obliqua ...

Discussion

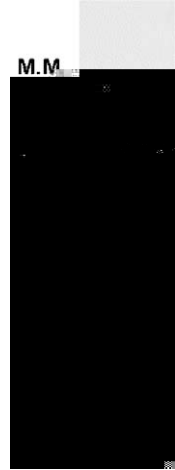
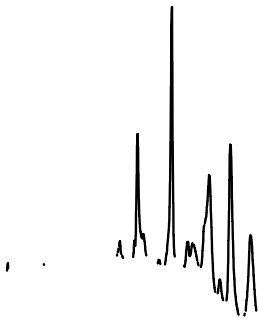
... Discussion ...



suspectum Rhopilema nomadica
 L. obliqua
 L. obliqua
 Euproctis

Polybia paulista
 Apis mellifera
 L. obliqua
 L. obliqua
 Heloderma horridum horridum
 L. obliqua
 L. obliqua
 Lonomia obliqua
 Euproctis chrysorrhoea

Euproctis subflava a L
Agelaia pallipes pallipes a L
L. obliqua L



... L. obliqua ...

Acknowledgments

...

References

... Lonomia ... obliqua ...

